



# moderna stairs

# moderna scala stair system

Whether you want to give a new look to a staircase in an old building or add an attractive and durable covering to a staircase in a new building – the moderna scala stair system provides just the right solution! High-quality laminate flooring for stairs and adjacent floor areas ensures a uniform appearance and is easy to install by yourself!



## EASY TO DIY

A few basic DIY skills are all you need to install moderna scala – no special tools or major construction work needed!



## ROBUST AND DURABLE

Suitable for heavily used living areas and commercial areas with moderate use.



## EASY TO MAINTAIN

The moderna stair covering is extremely tough and can easily be cleaned without special products or stain remover!



## SLIP-RESISTANT AND SKID-PROOF

Bare feet, socks or wet shoes – no problem for our stair covering, featuring a non-slip surface



## A HARMONIOUS SENSE OF SPACE

Floor and stairs form a seamless unit – thanks to our floor coverings with matching decors, as the perfect complement to your stairs!



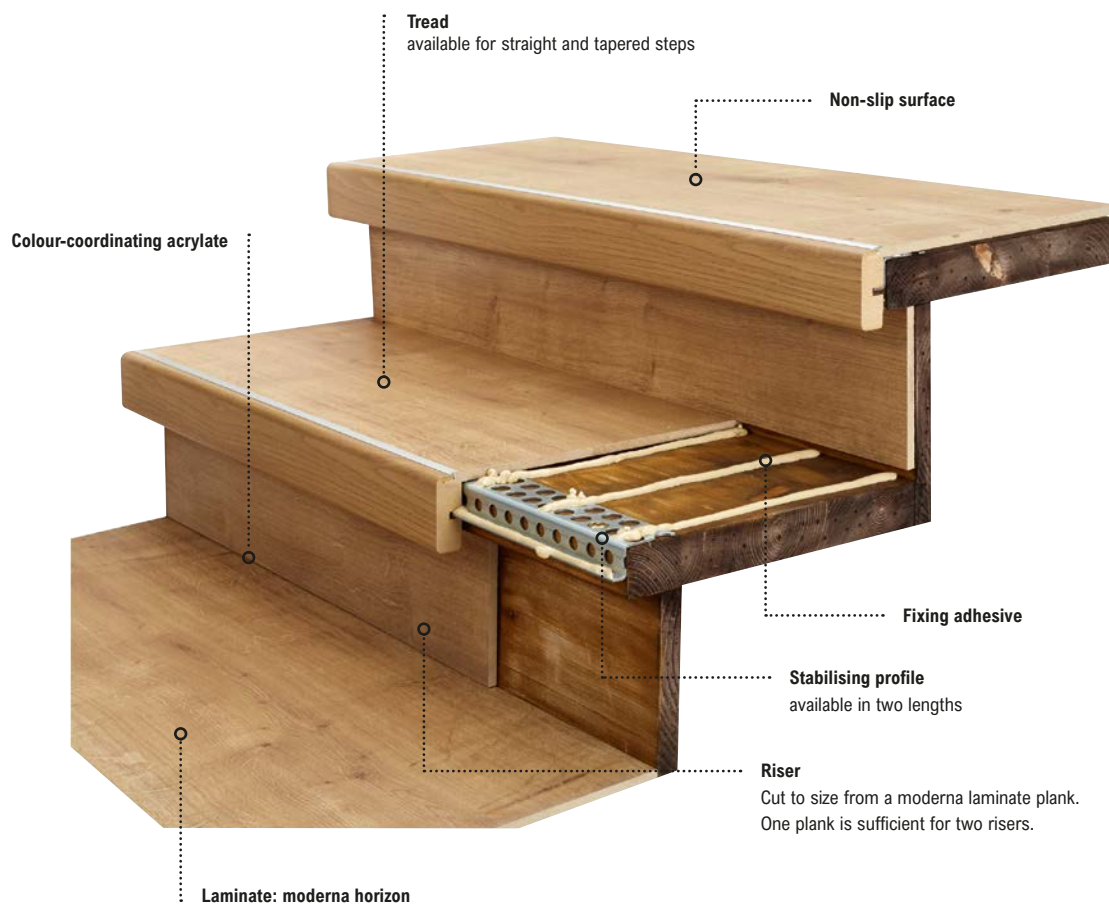
**Laminate for  
stairs and floors**

# moderna scala – one for all

## The complete solution for your floor and stairs

Do it yourself at a favourable price – no problem with the moderna scala stair system. Specially designed by specialist craftsmen, moderna scala is a well-thought-out modular system with tailor-made solutions for every requirement.

- ✓ Suitable for heavily used living areas and commercial areas with moderate use
- ✓ Laminate floor that matches the decor for all stair covers



For intermediate or hallway landings, please use the moderna scala landing tread.



# Decors



Fenya oak



Talida oak



Dona oak



Baldo oak

## Checklist:

# How to plan your stair renovation

# A.

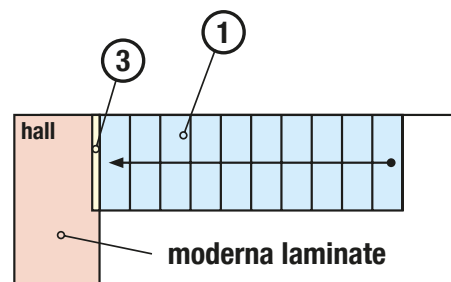
The first step is to decide at home what kind of staircase you want. Should it be straight or spiralled? With or without landings? The drawings on the right will help you make this choice.

# B.

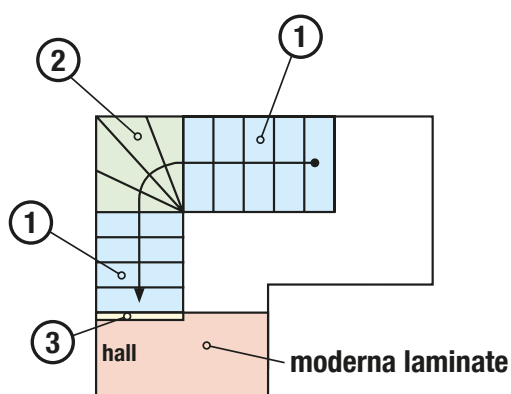
Decided on the type of staircase? The numbers on the drawings will explain to you exactly which materials you require for your staircase renovation. For quick and reliable identification, you will also find the numbers on the moderna scala packages.

# C.

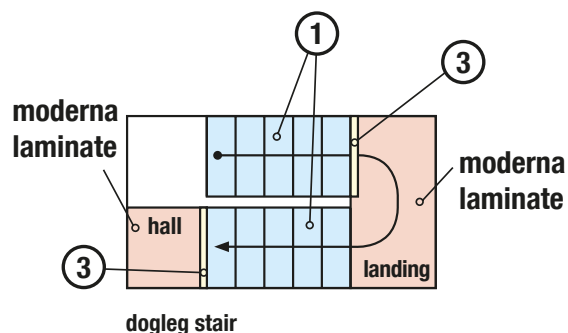
Also think about the right accessories such as stabilising profiles or fixing adhesive. Please also take into account the matching insulating underlay under the laminate floor in the landing or hallway area.



single run stair



single run quarter-turn stair



dogleg stair

## Package contents

All packages stocked by your specialist retailer are identified by a number (1, 2 or 3). After you have taken the measurements and counted the number of steps on your stairs, use the package contents to calculate the materials you need for your staircase.

### Package 1



#### moderna scala stair kit 1 150 for straight steps

Package contents: 2 treads

Dimensions: 1 150 x 326 x 60 mm



### Package 2



#### moderna scala stair kit 1 450 for tapered steps

Package contents: Treads plus extension  
with click connection

Tread dimensions: 1 450 x 326 x 60 mm

Tread depth extension dimensions: 1 287 x 320 x 8 mm



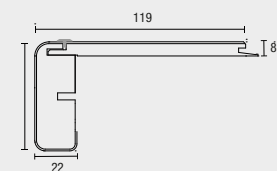
### Package 3



#### moderna scala landing tread 1 280 with MULTICLIC connection

Package contents: 1 landing tread

Dimensions: 1 280 x 119 x 60 mm



### moderna laminate



#### Collection: moderna horizon

Package contents: 6 laminate planks (2.535 m²/pack.)

Dimensions: 1 288 x 328 x 8 mm



# Simple. Clean. Easy to install by yourself.

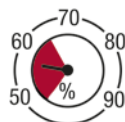
## Installation



48 h

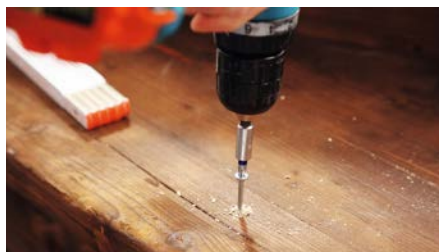


15 – 29 °C



45 – 65 %

Acclimatisation of the materials:  
48 hours at a room temperature of approx. 20°C (at least 15°C) and a relative air humidity of approx. 30–65%. Place the packages in the centre of the room, flat and unopened.



Screw the tread and riser to each other to reduce stair creaking. 3 to 5 fixings are recommended.



A stabilising profile is added to the stair edge if the original steps are badly worn.



Measure the step size using a tape measure or rule, apply the measurement to the step element and then saw it to size.



Measure the riser using a tread sample. Apply the sizes to the riser element and then saw it to size.



Apply fixing adhesive parallel to the direction of movement.



Apply fixing adhesive generously onto the inside of the step element's front edge.



Bond in and align the tread.



Apply adhesive to the riser.



Bond in the riser.



Install the landing tread.



Following installation, the staircase is sealed with the corresponding moderna joint sealant.



## Accessories:



### Stabilising profile and installation kit

Stabilising profile to level out badly worn steps. The accompanying installation kit is specially designed to match the hole pattern of the stabilising profile.

Stabilising profile dimensions: 45 x 23 x 830 / 1250 mm

Installation kit contents: 50 screws / washers



### Side panel (solid wood) and corner moulding

Side panel to cover open treads. Corner moulding to cover open risers at the side.



### moderna fixing adhesive

MS-Polymer-based 1K fixing adhesive

Contents: 290 ml (cartridge)

## moderna stair profile

Besides the moderna scala complete solution, moderna offers you even more possibilities for designing your staircase. With laminate, vinyl or parquet.



### Stair profile (3–7 mm/7–16 mm)

+ Silver and titanium

+ Length: 1000 mm, 3000 mm







© 2022 by Moderna GmbH & Co. KG

Variations in colour and structure are possible due to printing conditions. We reserve the right to make changes.

No responsibility is assumed for errors.

Moderna GmbH & Co. KG

Zum Walde 21

59602 Rütten-Meiste, Germany

Phone: +49 2952 4170-330

Fax: +49 2952 816-95-330

info@moderna.de | [www.moderna.de/en](http://www.moderna.de/en)

EN

